



# Buffet Station

- ALUMINUM FOLDING MODULE SERIES
- U-TINES LINE
- THE CHANGE MAGICALLY
- NEW CHINESE SERIES
- SIMPLE LINE
- PALM TREES

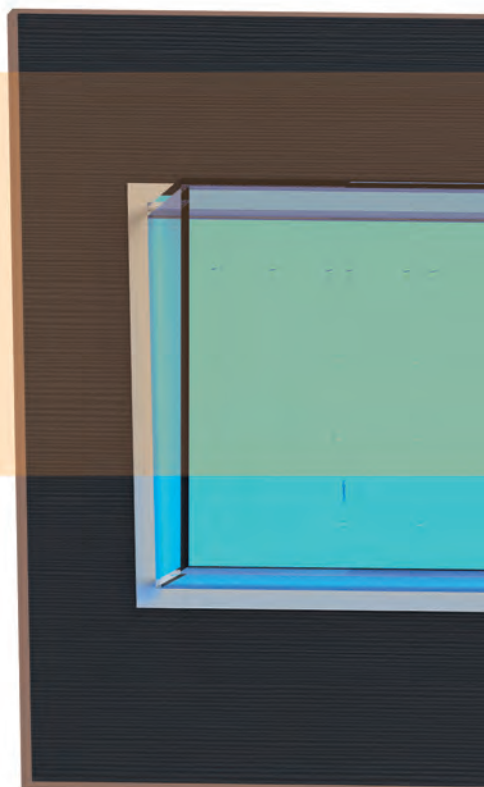
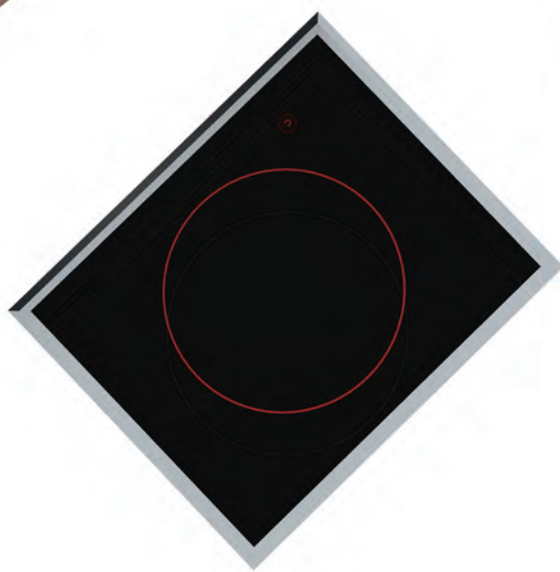
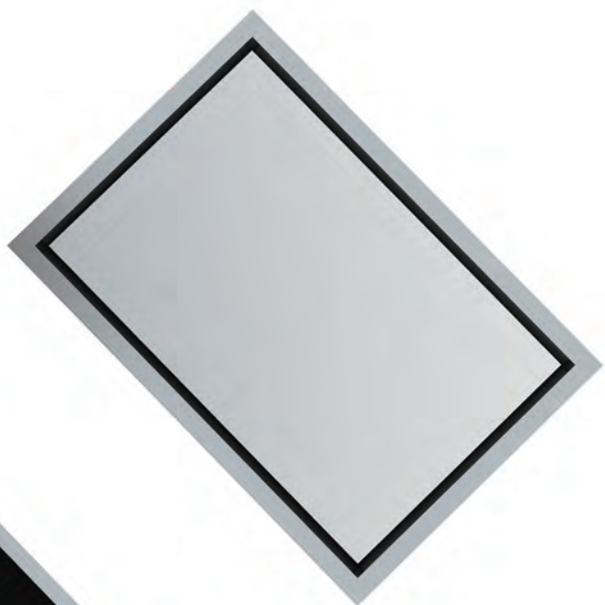
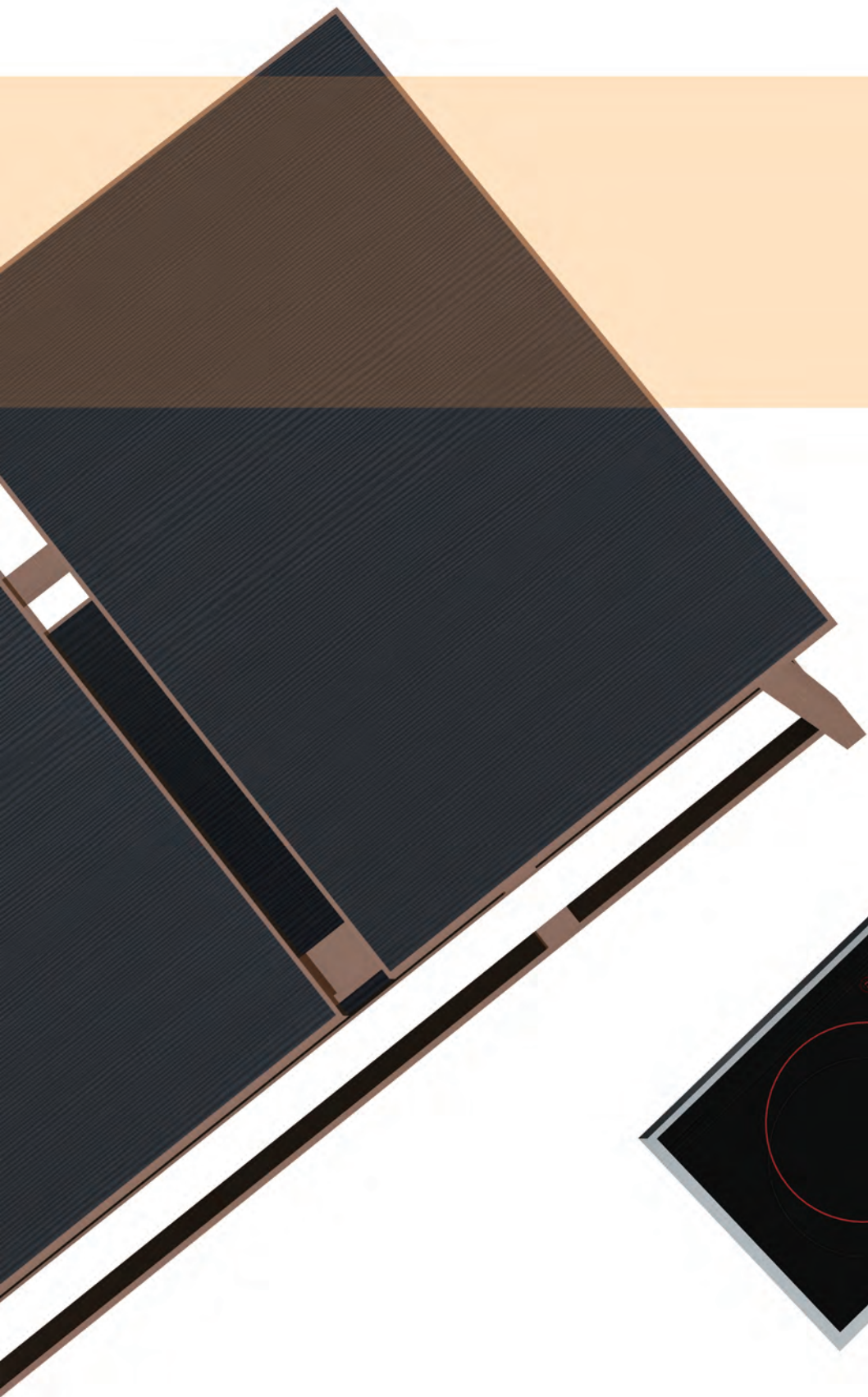
*Innovation  
make life more exciting!*



**Fermann**



*Infinite Possibilities*  
*Enjoy the cooking*



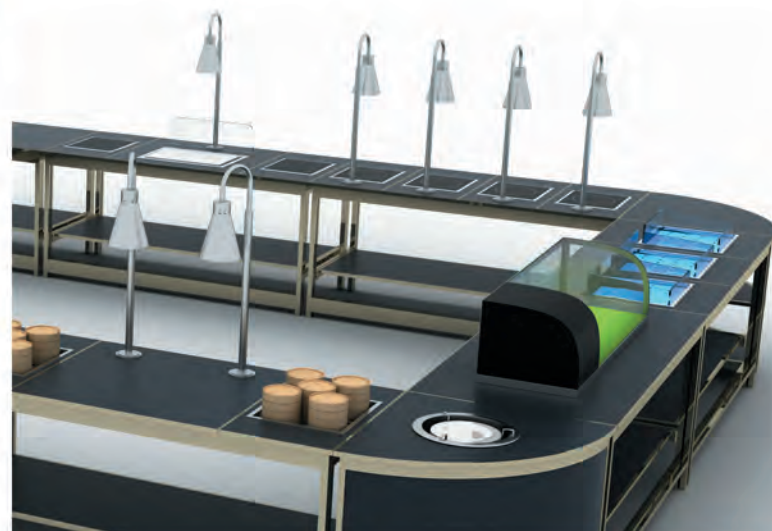


# ALUMINUM FOLDING MODULE SERIES



Material: super light, rust proof, insulation material and Aluminum Alloy frame edge, surface abrasion resistant scratch hardness and anti rust treatment, matte pits molding hardware.

Configuration: embedded removable free collocation type module, ultra light and wear-resistant (200 DEG C) import imitation stone surface, Aluminum Alloy molding, edge seamless Aluminum Alloy overall edge, full folding, without any auxiliary tools and accessories; hidden power line design patent;

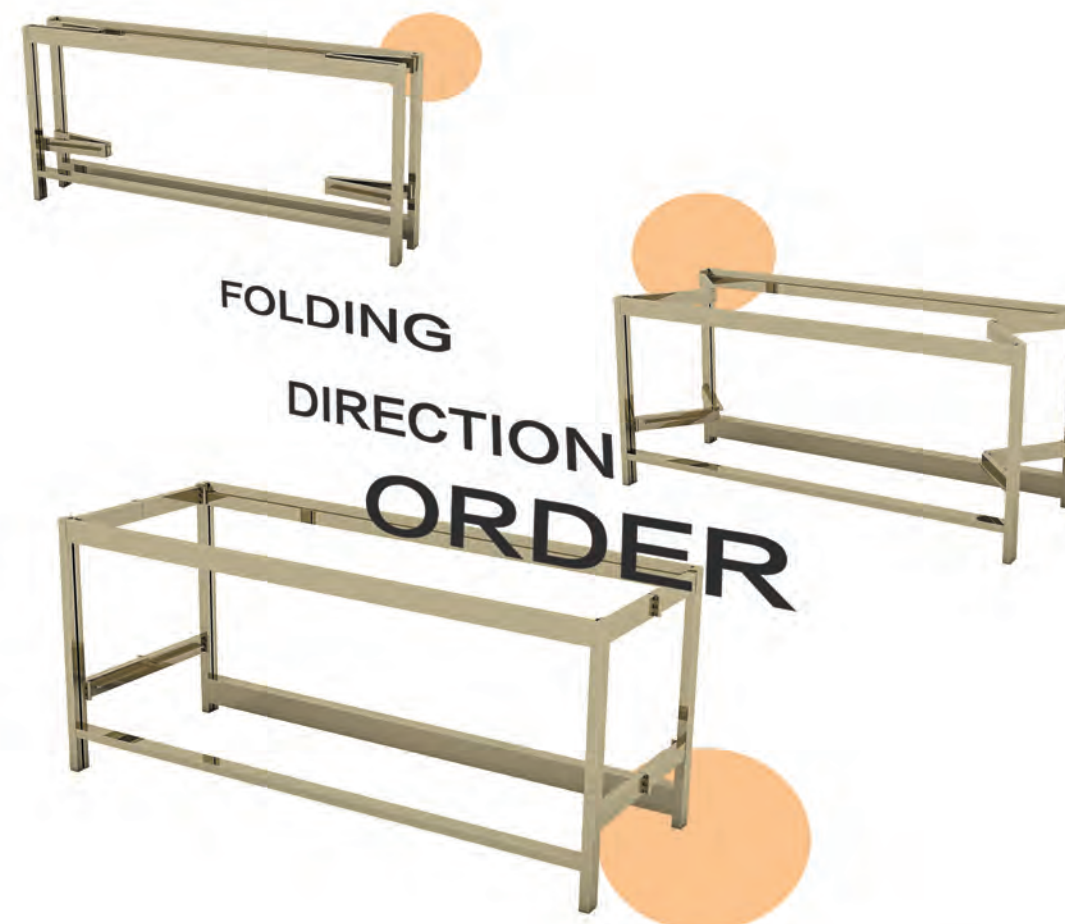


SZIE:  
800\*800\*850MM

CODE: F-B.S.17.01T  
BRAND: FERMANN

## SALAD BAR SIDE STATION

Metal frame, the surface of wear-resistant, rust proof metal paint, wear-resistant, high temperature, corrosion resistant black panels.



DESCRIPTION  
CODE:F-B.S.17.01  
SIZE:1800\*800\*850MM





### ✦ ICE BASIN MODULE

>> CODE: F-B.S.17.01.01  
>> BRAND: FERMANN  
>> SIZE: L900\*W800\*H290MM  
>> VOLTAGE / POWER:220V/200W

### ✦ FLAT MULTI FUNCTION MODULE

>> CODE: F-B.S.17.01.02  
>> BRAND: FERMANN  
>> SIZE: L900\*W800\*H20MM

### ✦ CARVING MODULE

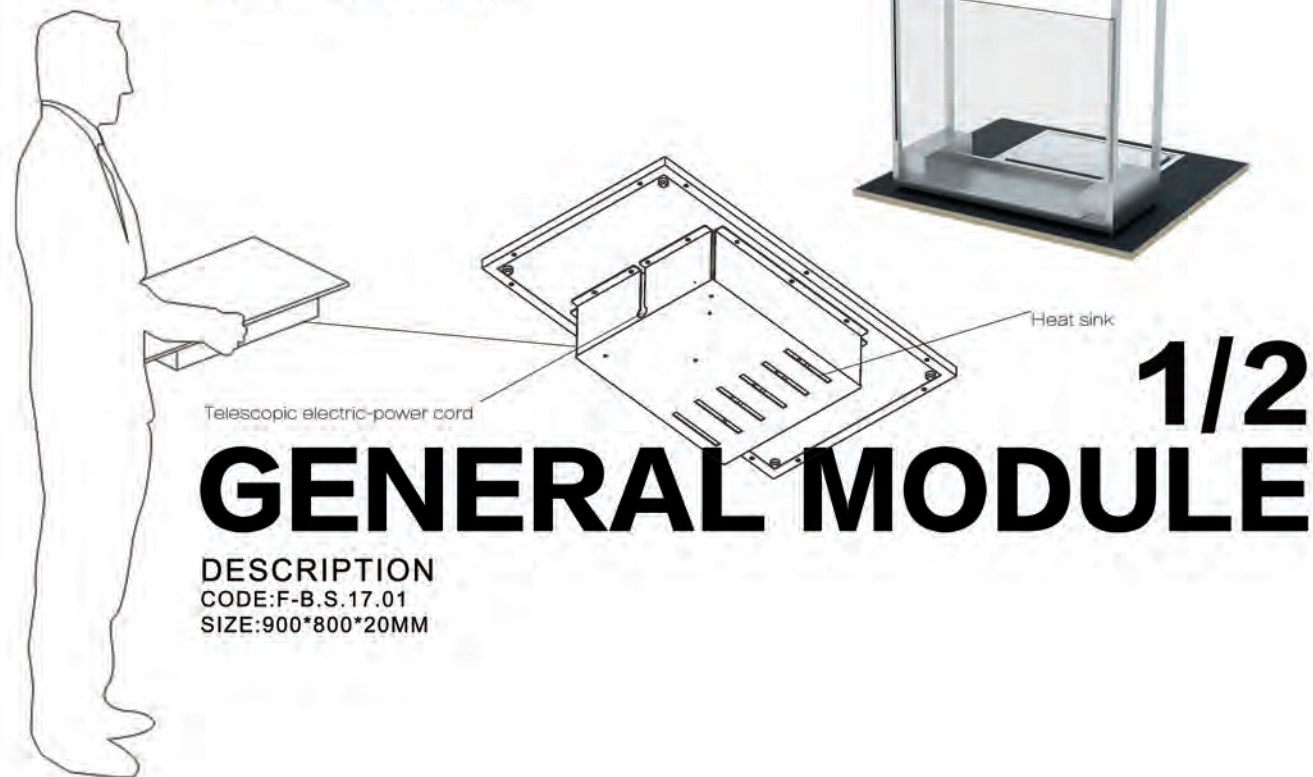
>> CODE: F-B.S.17.01.03  
>> BRAND: FERMANN  
>> SIZE: L900\*W800\*H20MM

### ✦ ELECTRIC FRYING STOVE MODULE

>> CODE: F-B.S.17.01.05  
>> BRAND: FERMANN  
>> SIZE: L900\*W800\*H150MM  
>> VOLTAGE / POWER:220V/3500W

### ✦ ROAST MEAT MODULE

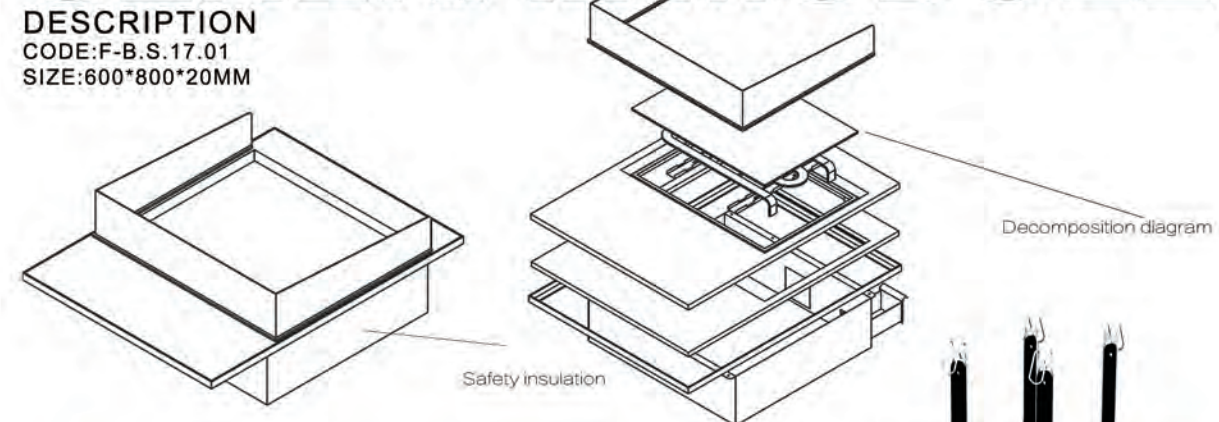
>> CODE: F-B.S.17.01.04  
>> BRAND: FERMANN  
>> SIZE: L900\*W800\*H20MM  
>> VOLTAGE / POWER:220V/500W



# 1/3

# GENERAL MODULE

DESCRIPTION  
CODE:F-B.S.17.01  
SIZE:600\*800\*20MM



### ✦ NOODLE COOKING MODULE

>> CODE: F-B.S.17.01.06  
>> BRAND: FERMANN  
>> SIZE: L600\*W800\*H232MM  
>> VOLTAGE / POWER:220V/2000W

### ✦ INDUCTION COOKER MODULE

>> CODE: F-B.S.17.01.07  
>> BRAND: FERMANN  
>> SIZE: L600\*W800\*H140MM  
>> VOLTAGE / POWER:220V/2400W

### ✦ SOUP MODULE

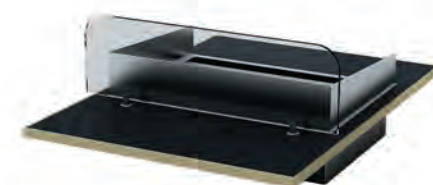
>> CODE: F-B.S.17.01.08  
>> BRAND: FERMANN  
>> SIZE: L600\*W800\*H201MM  
>> VOLTAGE / POWER:220V/1000W

### ✦ GRIDDLE MODULE

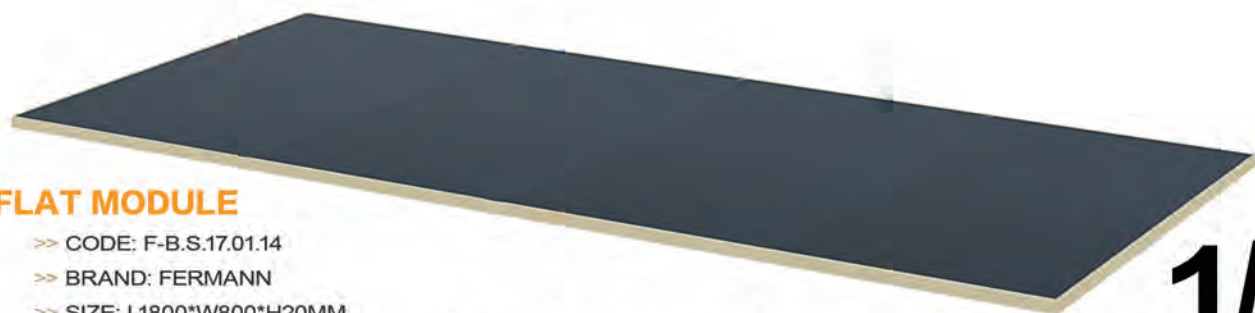
>> CODE: F-B.S.17.01.09  
>> BRAND: FERMANN  
>> SIZE: L900\*W800\*H300MM  
>> VOLTAGE / POWER:220V/2000W

### ✦ FLAT MODULE

>> CODE: F-B.S.17.01.10  
>> BRAND: FERMANN  
>> SIZE: L900\*W800\*H20MM







## ✦ FLAT MODULE

>> CODE: F-B.S.17.01.14  
>> BRAND: FERMANN  
>> SIZE: L1800\*W800\*H20MM

# 1/1

# GENERAL MODULE

DESCRIPTION  
CODE:F-B.S.17.01  
SIZE:1800\*800\*20MM



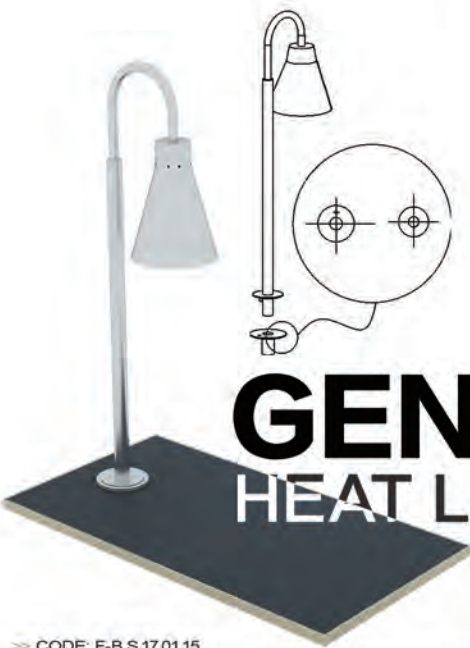
## ✦ DIMSUM MODULE

>> CODE: F-B.S.17.01.11  
>> BRAND: FERMANN  
>> SIZE: L450\*W800\*H237MM  
>> VOLTAGE / POWER:220V/2000W



## ✦ FLAT MODULE

>> CODE: F-B.S.17.01.12  
>> BRAND: FERMANN  
>> SIZE: L450\*W800\*H20MM



# GENERAL MODULE

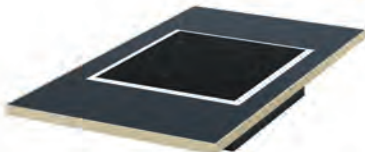
## HEAT LAMP

>> CODE: F-B.S.17.01.15  
>> BRAND: FERMANN  
>> SIZE: L262\*W171\*H950MM  
>> VOLTAGE / POWER:220V/275W

The heat preservation lamp is a modular accessory, and can be flexibly matched with the functions of each size module.

## ✦ IDUCTION RANGE MODULE

>> CODE: F-B.S.17.01.13  
>> BRAND: FERMANN  
>> SIZE: L450\*W800\*H140MM  
>> VOLTAGE / POWER:220V/2400W



# 1/4

DESCRIPTION  
CODE:F-B.S.17.01  
SIZE:450\*800\*20MM



## ✦ ICE CREAM STATION

DESCRIPTION :  
>> CODE: F-B.S.17.01A  
>> BRAND: FERMANN  
>> SIZE: 1800\*800\*850MM



## ✦ INDUCTION STATION

DESCRIPTION :  
>> CODE: F-B.S.17.01B  
>> BRAND: FERMANN  
>> SIZE: 1800\*800\*850MM



## ✦ SOUP STATION

DESCRIPTION :  
>> CODE: F-B.S.17.01C  
>> BRAND: FERMANN  
>> SIZE: 1800\*800\*850MM



## ✦ CHINESE NOODLE COOKING STATION

DESCRIPTION :  
>> CODE: F-B.S.17.01D  
>> BRAND: FERMANN  
>> SIZE: 1800\*800\*850MM



## ✦ CHINESE DIM SUM STATION

DESCRIPTION :  
>> CODE: F-B.S.17.01E  
>> BRAND: FERMANN  
>> SIZE: 1800\*800\*850MM



## ✦ SUSHI/SASHIMI COUNTER

DESCRIPTION :  
>> CODE: F-B.S.17.01G  
>> BRAND: FERMANN  
>> SIZE: 1800\*800\*850MM



## ✦ CARVING STATION

DESCRIPTION :  
>> CODE: F-B.S.17.01F  
>> BRAND: FERMANN  
>> SIZE: 1800\*800\*850MM



## ✦ PEKING DUCK STATION

DESCRIPTION :  
>> CODE: F-B.S.17.01H  
>> BRAND: FERMANN  
>> SIZE: 1800\*800\*850MM



## ✦ WOK FRYING STATION

DESCRIPTION :  
>> CODE: F-B.S.17.01I  
>> BRAND: FERMANN  
>> SIZE: 1800\*800\*850MM



## ✦ FLAT STATION

DESCRIPTION :  
>> CODE: B.S.17.01K  
>> BRAND: FERMANN  
>> SIZE: 1800\*800\*850MM



## ✦ INDUCTION STATION

DESCRIPTION :  
>> CODE: F-B.S.17.01J  
>> BRAND: FERMANN  
>> SIZE: 1800\*800\*850MM



## ✦ SALAD BAR STATION

DESCRIPTION :  
>> CODE: F-B.S.17.01L  
>> BRAND: FERMANN  
>> SIZE: 1800\*800\*850MM



## ✦ PASTA STATION

DESCRIPTION :  
>> CODE: F-B.S.17.01M  
>> BRAND: FERMANN  
>> SIZE: 1800\*800\*850MM



## ✦ CAKE STATION

DESCRIPTION :  
>> CODE: F-B.S.17.01N  
>> BRAND: FERMANN  
>> SIZE: 1800\*800\*850MM



## ✦ GRIDDLE STATION

DESCRIPTION :  
>> CODE: F-B.S.17.01O  
>> BRAND: FERMANN  
>> SIZE: 1800\*800\*850MM



## ✦ PLATE WARMER SIDE STATION

DESCRIPTION :  
>> CODE: F-B.S.17.01Q  
>> BRAND: FERMANN  
>> SIZE: 800\*800\*850MM



## ✦ INDUCTION SIDE STATION

DESCRIPTION :  
>> CODE: F-B.S.17.01S  
>> BRAND: FERMANN  
>> SIZE: 800\*800\*850MM



## ✦ FLAT SIDE STATION

DESCRIPTION :  
>> CODE: F-B.S.17.01R  
>> BRAND: FERMANN  
>> SIZE: 800\*800\*850MM

■ optional material



Black gold



Rose Gold



Titanium



Primary colors



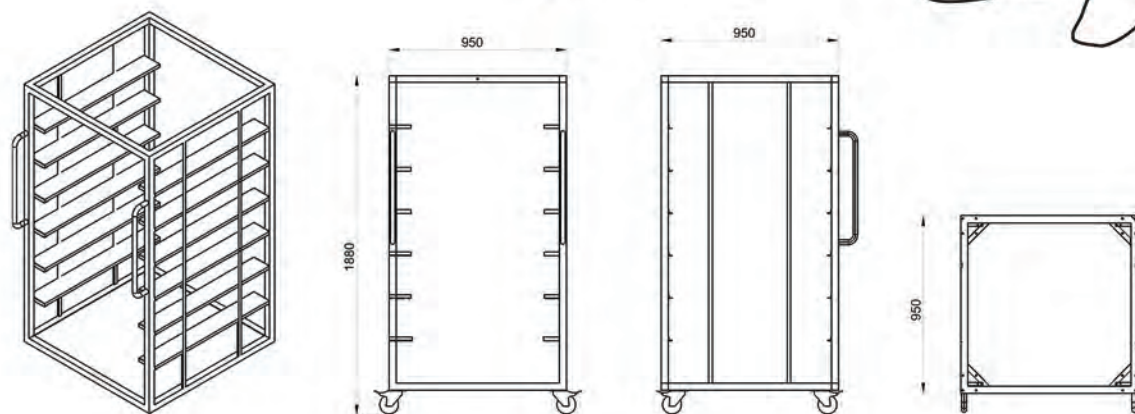
# OPTIONAL ACCESSORIES

## MODULE TROLLEY

### DESCRIPTION :

- >> CODE: F-B.S.17.01.16
- >> BRAND: FERMANN
- >> SIZE: 950\*950\*1880MM

>> Steel frame with black powder coating finishing .imported wheels.each trolley can carry 6-10pcs modules.



## BUFFET STATION TROLLEY

### DESCRIPTION :

- >> CODE: F-B.S.17.01.17
- >> BRAND: FERMANN
- >> SIZE: 1750\*1160\*2050MM

>> Steel frame with black powder coating finishing .imported wheels.each trolley can carry 6pcs table frame.



## HOLDING LAMP TROLLEY

### DESCRIPTION :

- >> CODE: F-B.S.17.01.18
- >> BRAND: FERMANN
- >> SIZE: 1400\*650\*1380MM

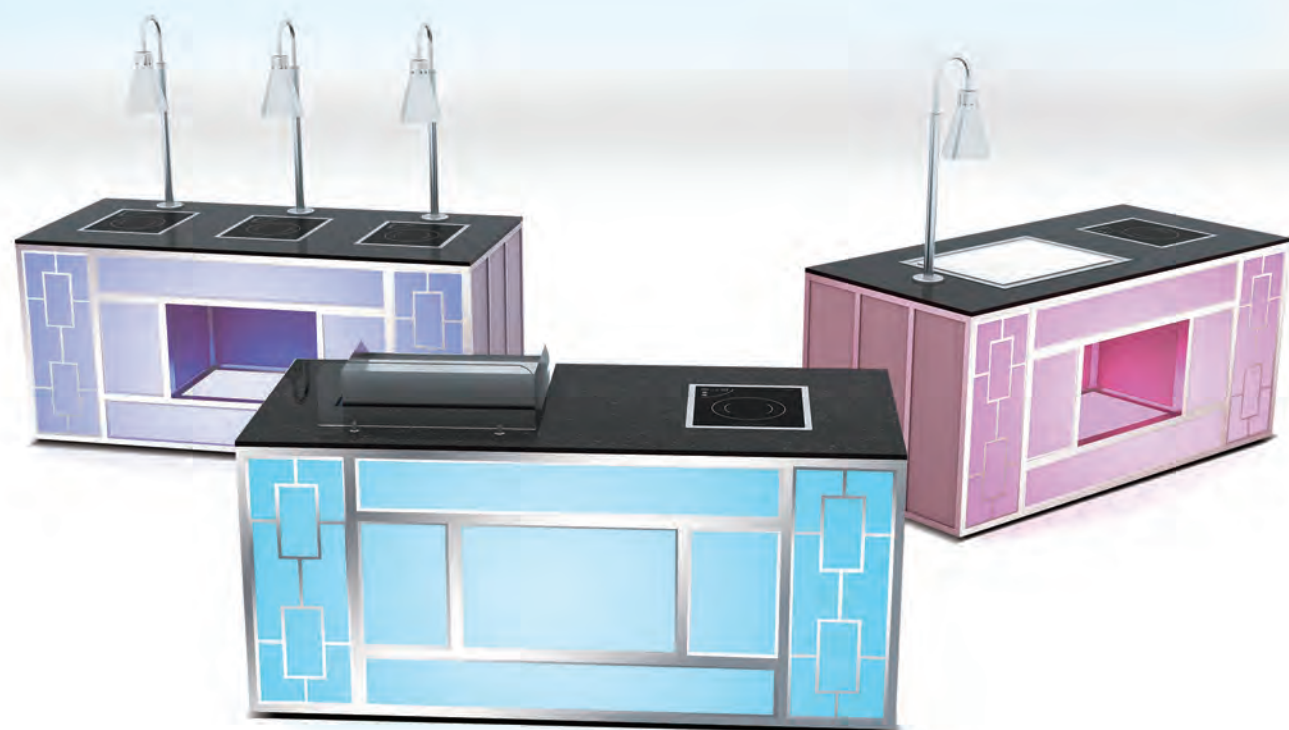
>> Steel frame with black powder coating finishing .imported wheels.



# THE CHANGE MAGICALLY

F-B.S.17.02

SUS304 stainless steel body structure, silver black marble, high density to prevent oil polishing, collocation floor load-bearing system, effectively prevent the surface rupture due to overload. Transparent stone body, LED color changing lamp belt system, mobile bearing mute casters, independent leakage switch protection system.



## FANTASY COLOR



# Fermann





#### ✦ ICE CREAM STATION

>> CODE: F-B.S.17.02.1  
 >> BRAND: FERMANN  
 >> SIZE: L1800\*W800\*H850MM  
 >> VOLTAGE / POWER:220V/2400W



#### ✦ INDUCTION STATION

>> CODE: F-B.S.17.02.2  
 >> BRAND: FERMANN  
 >> SIZE: L1800\*W800\*H850MM  
 >> VOLTAGE / POWER:220V/3825W



#### ✦ CHINESE NOODLE COOKING STATION

>> CODE: F-B.S.17.02.3  
 >> BRAND: FERMANN  
 >> SIZE: L1800\*W800\*H850MM  
 >> VOLTAGE / POWER:220V/8400W



#### ✦ PEKING DUCK STATION

>> CODE: F-B.S.17.02.7  
 >> BRAND: FERMANN  
 >> SIZE: L1800\*W800\*H850MM  
 >> VOLTAGE / POWER:220V/3000W



#### ✦ WOK FRYING STATION

>> CODE: F-B.S.17.02.8  
 >> BRAND: FERMANN  
 >> SIZE: L1800\*W800\*H850MM  
 >> VOLTAGE / POWER:220V/7550W



#### ✦ CAKE STATION

>> CODE: F-B.S.17.02.16  
 >> BRAND: FERMANN  
 >> SIZE: L1800\*W800\*H850MM  
 >> VOLTAGE / POWER:220V/400W



#### ✦ CHINESE DIM SUM STATION

>> CODE: F-B.S.17.02.4  
 >> BRAND: FERMANN  
 >> SIZE: L1800\*W800\*H850MM  
 >> VOLTAGE / POWER:220V/4000W



#### ✦ SUSHI/SASHIMI COUNTER

>> CODE: F-B.S.17.02.5  
 >> BRAND: FERMANN  
 >> SIZE: L1800\*W800\*H850MM  
 >> VOLTAGE / POWER:220V/500W



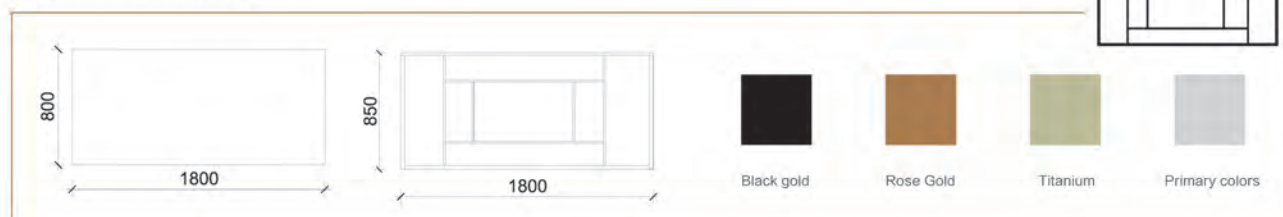
#### ✦ CARVING STATION

>> CODE: F-B.S.17.02.6  
 >> BRAND: FERMANN  
 >> SIZE: L1800\*W800\*H850MM  
 >> VOLTAGE / POWER:220V/3000W

## CLASSICS AND CHANGE

The classic Chinese pattern collocation 7 colorful changing lights, create atmosphere at

#### ■ Size and optional material



F-B.S.17.02

# FUNCTION DISPLAY



#### ✦ FLAT SIDE STATION

>> CODE: F-B.S.17.02.12  
 >> BRAND: FERMANN  
 >> SIZE: L800\*W800\*H850MM



#### ✦ INDUCTION SIDE STATION

>> CODE: F-B.S.17.02.13  
 >> BRAND: FERMANN  
 >> SIZE: L800\*W800\*H850MM  
 >> VOLTAGE / POWER:220V/2400W



#### ✦ PLATE WARMER SIDE STATION

>> CODE: F-B.S.17.02.14  
 >> BRAND: FERMANN  
 >> SIZE: L800\*W800\*H850MM  
 >> VOLTAGE / POWER:220V/400W



#### ✦ MOBILE BAR STATION

>> CODE: F-B.S.17.02.15  
 >> BRAND: FERMANN  
 >> SIZE: L1800\*W800\*H1150MM



#### ✦ FLAT STATION

>> CODE: F-B.S.17.02.9  
 >> BRAND: FERMANN  
 >> SIZE: L1800\*W800\*H850MM



#### ✦ SALAD BAR STATION

>> CODE: F-B.S.17.02.10  
 >> BRAND: FERMANN  
 >> SIZE: L1800\*W800\*H850MM  
 >> VOLTAGE / POWER:220V/400W



#### ✦ GRIDDLE STATION

>> CODE: F-B.S.17.02.11  
 >> BRAND: FERMANN  
 >> SIZE: L1800\*W800\*H850MM  
 >> VOLTAGE / POWER:220V/7400W

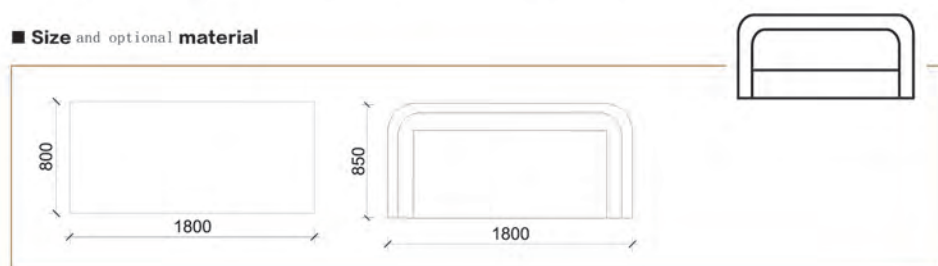


F-B.S.17.03

# U-TINES LINE

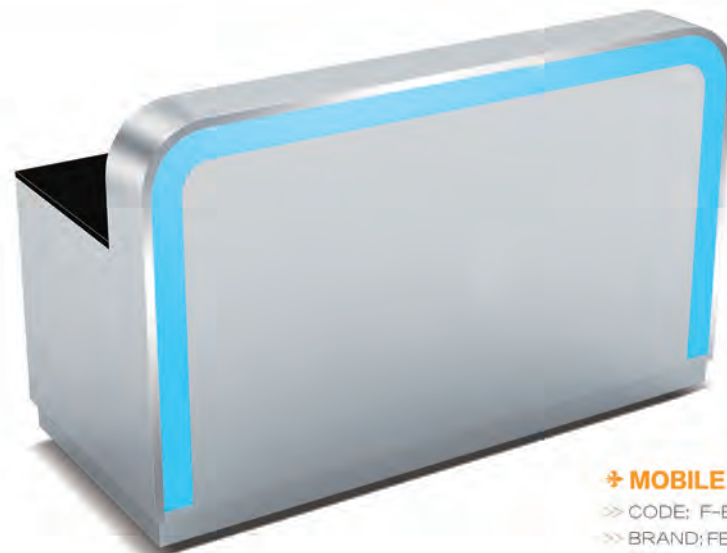
SUS304 stainless steel body structure, stainless steel brushed so finish of the table top , table loading, compression configuration, effectively protect the table bearing. LED lighting system. Movable bearing mute castor; independent leakage switch protection system.

■ Size and optional material



## FREE AND FASHION





## SMOBILE BAR STATION

### ✦ MOBILE BAR STATION

>> CODE: F-B.S.17.03.15  
 >> BRAND: FERMANN  
 >> SIZE: L1800\*W800\*H1150MM



### ✦ FLAT SIDE STATION

>> CODE: F-B.S.17.03.12  
 >> BRAND: FERMANN  
 >> SIZE: L800\*W800\*H850MM



### ✦ PLATE WARMER SIDE STATION

>> CODE: F-B.S.17.03.14  
 >> BRAND: FERMANN  
 >> SIZE: L800\*W800\*H850MM  
 >> VOLTAGE / POWER: 220V/400W



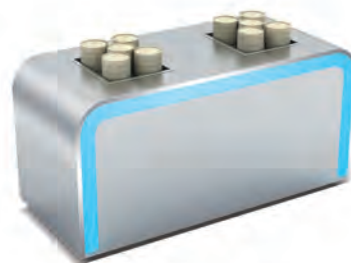
### ✦ INDUCTION SIDE STATION

>> CODE: F-B.S.17.03.13  
 >> BRAND: FERMANN  
 >> SIZE: L800\*W800\*H850MM  
 >> VOLTAGE / POWER: 220V/2400W



### ✦ CHINESE NOODLE COOKING STATION

>> CODE: F-B.S.17.03.3  
 >> BRAND: FERMANN  
 >> SIZE: L1800\*W800\*H850MM  
 >> VOLTAGE / POWER: 220V/8400W



### ✦ CHINESE DIM SUM STATION

>> CODE: F-B.S.17.03.4  
 >> BRAND: FERMANN  
 >> SIZE: L1800\*W800\*H850MM  
 >> VOLTAGE / POWER: 220V/4000W



### ✦ CAKE STATION

>> CODE: F-B.S.17.03.16  
 >> BRAND: FERMANN  
 >> SIZE: L1800\*W800\*H850MM  
 >> VOLTAGE / POWER: 220V/400W



### ✦ WOK FRYING STATION

>> CODE: F-B.S.17.03.8  
 >> BRAND: FERMANN  
 >> SIZE: L1800\*W800\*H850MM  
 >> VOLTAGE / POWER: 220V/7550W



### ✦ CARVING STATION

>> CODE: F-B.S.17.03.6  
 >> BRAND: FERMANN  
 >> SIZE: L1800\*W800\*H850MM  
 >> VOLTAGE / POWER: 220V/3000W



### ✦ INDUCTION STATION

>> CODE: F-B.S.17.03.2  
 >> BRAND: FERMANN  
 >> SIZE: L1800\*W800\*H850MM  
 >> VOLTAGE / POWER: 220V/3825W



### ✦ PEKING DUCK STATION

>> CODE: F-B.S.17.03.7  
 >> BRAND: FERMANN  
 >> SIZE: L1800\*W800\*H850MM  
 >> VOLTAGE / POWER: 220V/3000W



### ✦ ICE CREAM STATION

>> CODE: F-B.S.17.03.1  
 >> BRAND: FERMANN  
 >> SIZE: L1800\*W800\*H850MM  
 >> VOLTAGE / POWER: 220V/2400W



### ✦ SALAD BAR STATION

>> CODE: F-B.S.17.03.10  
 >> BRAND: FERMANN  
 >> SIZE: L1800\*W800\*H850MM  
 >> VOLTAGE / POWER: 220V/400W



### ✦ GRIDDLE STATION

>> CODE: F-B.S.17.03.11  
 >> BRAND: FERMANN  
 >> SIZE: L1800\*W800\*H850MM  
 >> VOLTAGE / POWER: 220V/7400W



### ✦ SUSHI/SASHIMI COUNTER

>> CODE: F-B.S.17.03.5  
 >> BRAND: FERMANN  
 >> SIZE: L1800\*W800\*H850MM  
 >> VOLTAGE / POWER: 220V/500W



### ✦ FLAT STATION

>> CODE: F-B.S.17.03.9  
 >> BRAND: FERMANN  
 >> SIZE: L1800\*W800\*H850MM



# NEN-STYLE

F-B.S.17.04



## PANORAMA

SUS304 brushed stainless steel body frame, wooden body, wear-resistant high temperature corrosion resistant quartz stone countertops, imported acrylic with LED lights, Place dishes with LED spotlights, mobile bearing imported mute casters; independent switch leakage protection system.

## FUNCTION DISPLAY



### ✦ FLAT SIDE STATION

>> CODE: F-B.S.17.04.12  
>> BRAND: FERMANN  
>> SIZE: L800\*W800\*H850MM



### ✦ INDUCTION SIDE STATION

>> CODE: F-B.S.17.04.13  
>> BRAND: FERMANN  
>> SIZE: L800\*W800\*H850MM  
>> VOLTAGE / POWER: 220V/2400W



### ✦ PLATE WARMER SIDE STATION

>> CODE: F-B.S.17.04.14  
>> BRAND: FERMANN  
>> SIZE: L800\*W800\*H850MM  
>> VOLTAGE / POWER: 220V/400W



# MOBILE BAR STATION



● MOBILE BAR STATION  
» CODE: F-B.S.17.04.15  
» BRAND: FERMANN  
» SIZE: L1800\*W800\*H1150MM



● CAKE STATION  
» CODE: F-B.S.17.04.16  
» BRAND: FERMANN  
» SIZE: L1800\*W800\*H850MM  
» VOLTAGE / POWER: 220V/400W



● PEKING DUCK STATION  
» CODE: F-B.S.17.04.7  
» BRAND: FERMANN  
» SIZE: L1800\*W800\*H850MM  
» VOLTAGE / POWER: 220V/3000W



● WOK FRYING STATION  
» CODE: F-B.S.17.04.8  
» BRAND: FERMANN  
» SIZE: L1800\*W800\*H850MM  
» VOLTAGE / POWER: 220V/7550W



● CARVING STATION  
» CODE: F-B.S.17.04.6  
» BRAND: FERMANN  
» SIZE: L1800\*W800\*H850MM  
» VOLTAGE / POWER: 220V/3000W



● SALAD BAR STATION  
» CODE: F-B.S.17.04.10  
» BRAND: FERMANN  
» SIZE: L1800\*W800\*H850MM  
» VOLTAGE / POWER: 220V/400W



● GRIDDLE STATION  
» CODE: F-B.S.17.04.11  
» BRAND: FERMANN  
» SIZE: L1800\*W800\*H850MM  
» VOLTAGE / POWER: 220V/7400W



● FLAT STATION  
» CODE: F-B.S.17.04.9  
» BRAND: FERMANN  
» SIZE: L1800\*W800\*H850MM



● SUSHI/SASHIMI COUNTER  
» CODE: F-B.S.17.02.5  
» BRAND: FERMANN  
» SIZE: L1800\*W800\*H850MM  
» VOLTAGE / POWER: 220V/500W



● ICE CREAM STATION  
» CODE: F-B.S.17.02.1  
» BRAND: FERMANN  
» SIZE: L1800\*W800\*H850MM  
» VOLTAGE / POWER: 220V/2400W



● INDUCTION STATION  
» CODE: F-B.S.17.04.2  
» BRAND: FERMANN  
» SIZE: L1800\*W800\*H850MM  
» VOLTAGE / POWER: 220V/3825W

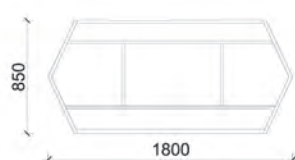


● CHINESE NOODLE COOKING STATION  
» CODE: F-B.S.17.04.3  
» BRAND: FERMANN  
» SIZE: L1800\*W800\*H850MM  
» VOLTAGE / POWER: 220V/4400W



● CHINESE DIM SUM STATION  
» CODE: F-B.S.17.04.4  
» BRAND: FERMANN  
» SIZE: L1800\*W800\*H850MM  
» VOLTAGE / POWER: 220V/4000W

## Size and optional material



Black gold



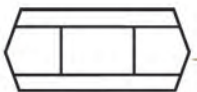
Rose Gold



Titanium



Primary colors





# PALM TREES

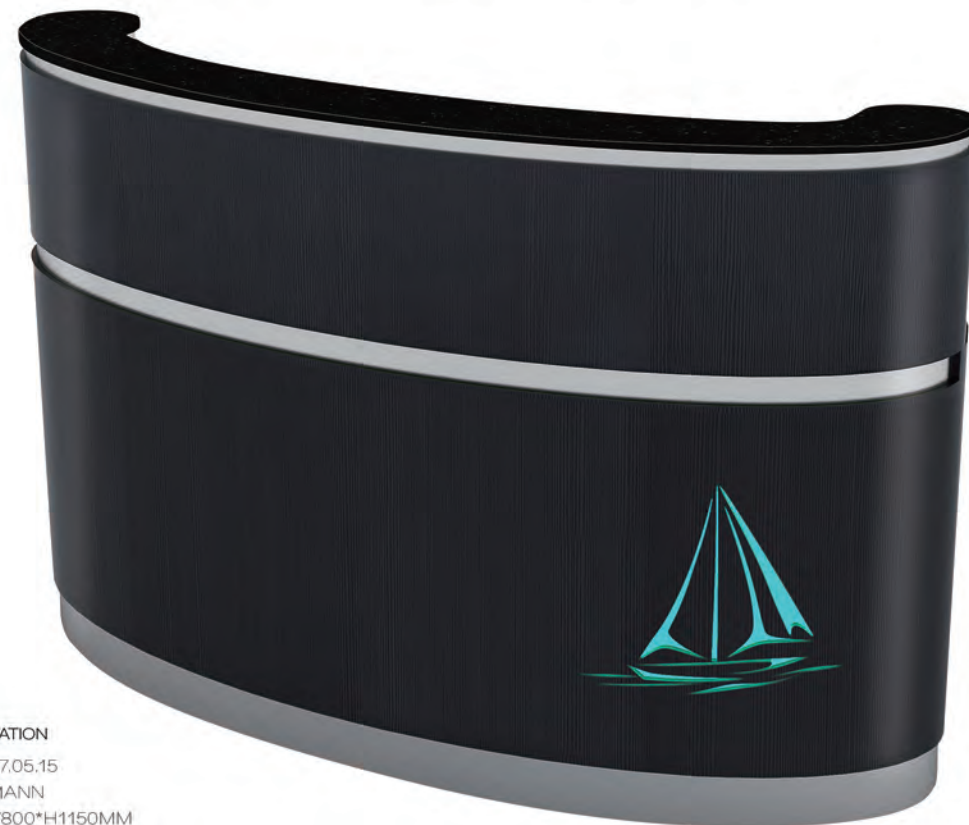
F-B.S.17.05





# SMOBILE BAR STATION

Garbage bin, 2 ice trough, double open door, imported casters



- MOBILE BAR STATION
- >> CODE: F-B.S.17.05.15
- >> BRAND: FERMANN
- >> SIZE: L1800\*W800\*H1150MM

# PANORAMA

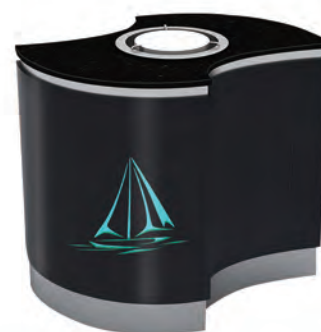


- GRIDDLE STATION
- >> CODE: F-B.S.17.05.11
- >> BRAND: FERMANN
- >> SIZE: L1800\*W800\*H850MM
- >> VOLTAGE / POWER: 220V/5000W

- FLAT STATION
- >> CODE: F-B.S.17.05.9
- >> BRAND: FERMANN
- >> SIZE: L1800\*W800\*H850MM



- FLAT SIDE STATION
- >> CODE: F-B.S.17.05.12
- >> BRAND: FERMANN
- >> SIZE: L900\*W800\*H850MM



- PLATE WARMER SIDE STATION
- >> CODE: F-B.S.17.05.14
- >> BRAND: FERMANN
- >> SIZE: L900\*W800\*H850MM
- >> VOLTAGE / POWER: 220V/400W



- INDUCTION SIDE STATION
- >> CODE: F-B.S.17.05.13
- >> BRAND: FERMANN
- >> SIZE: L900\*W800\*H850MM
- >> VOLTAGE / POWER: 220V/2400W



- WOK FRYING STATION
- >> CODE: F-B.S.17.05.8
- >> BRAND: FERMANN
- >> SIZE: L1800\*W800\*H850MM
- >> VOLTAGE / POWER: 220V/7550W



- CARVING STATION
- >> CODE: F-B.S.17.05.6
- >> BRAND: FERMANN
- >> SIZE: L1800\*W800\*H850MM
- >> VOLTAGE / POWER: 220V/3000W



- INDUCTION STATION
- >> CODE: F-B.S.17.05.2
- >> BRAND: FERMANN
- >> SIZE: L1800\*W800\*H850MM
- >> VOLTAGE / POWER: 220V/3825W



# PALM TREES

F-B.S.17.05

Silver Star black quartz stone countertops, high density anti oil polishing surface treatment, surface plate bearing system, effectively prevent the overload due to rupture of quartz stone. High temperature and high strength pressing curved plate, high temperature baking process; light chocolate decorative pattern, LED colorful magic lamp with DYSUS304 system, brushed stainless steel side; PVC anti-collision system, mobile bearing mute casters; independent switch leakage protection system.



## Size and optional material



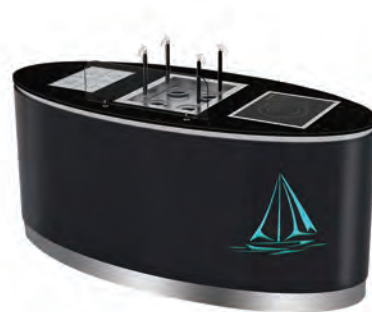
# FUNCTION DISPLAY



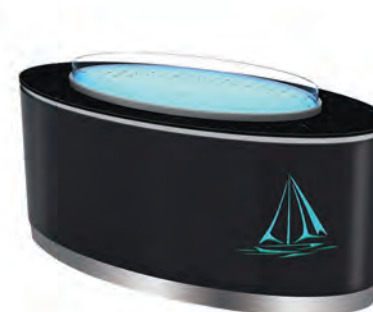
● CHINESE DIM SUM STATION  
 >> CODE: F-B.S.17.05.4  
 >> BRAND: FERMANN  
 >> SIZE: L1800\*W800\*H850MM  
 >> VOLTAGE / POWER: 220V/4000W



● ICE CREAM STATION  
 >> CODE: F-B.S.17.05.1  
 >> BRAND: FERMANN  
 >> SIZE: L1800\*W800\*H850MM  
 >> VOLTAGE / POWER: 220V/2400W



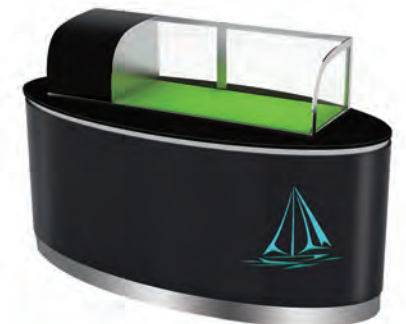
● CHINESE NOODLE COOKING STATION  
 >> CODE: F-B.S.17.05.3  
 >> BRAND: FERMANN  
 >> SIZE: L1800\*W800\*H850MM  
 >> VOLTAGE / POWER: 220V/4400W



● SALAD BAR STATION  
 >> CODE: F-B.S.17.05.10  
 >> BRAND: FERMANN  
 >> SIZE: L1800\*W800\*H850MM  
 >> VOLTAGE / POWER: 220V/200W



● PEKING DUCK STATION  
 >> CODE: F-B.S.17.05.7  
 >> BRAND: FERMANN  
 >> SIZE: L1800\*W800\*H850MM  
 >> VOLTAGE / POWER: 220V/3000W



● SUSHI/SASHIMI COUNTER  
 >> CODE: F-B.S.17.05.5  
 >> BRAND: FERMANN  
 >> SIZE: L1800\*W800\*H850MM  
 >> VOLTAGE / POWER: 220V/500W



# NATURAL PRESENT

# SIMPLE LINE

F-B.S.17.06



SUS304 drawing stainless steel body frame, wooden body, wear-resistant, high temperature, corrosion protection, artificial quartz mesa, moving bearing mute casters; independent leakage switch protection system.





● MOBILE BAR STATION  
 >> CODE: F-B.S.17.06.15  
 >> BRAND: FERMANN  
 >> SIZE: L1800\*W800\*H1150MM

# FUNCTION DISPLAY

## SIMPLE LINE

Fashion Brief, close to the natural color of the panel, emitting a warm humanistic color



● ICE CREAM STATION  
 >> CODE: F-B.S.17.06.1  
 >> BRAND: FERMANN  
 >> SIZE: L1800\*W800\*H850MM  
 >> VOLTAGE / POWER: 220V/500W



● CAKE STATION  
 >> CODE: F-B.S.17.06.16  
 >> BRAND: FERMANN  
 >> SIZE: L1800\*W800\*H850MM  
 >> VOLTAGE / POWER: 220V/400W



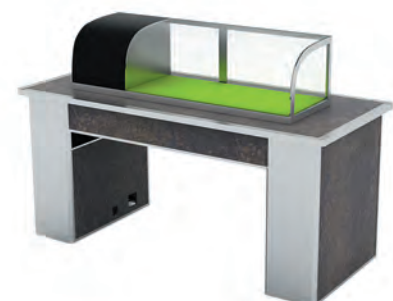
● CARVING STATION  
 >> CODE: F-B.S.17.06.6  
 >> BRAND: FERMANN  
 >> SIZE: L1800\*W800\*H850MM  
 >> VOLTAGE / POWER: 220V/3000W



● PEKING DUCK STATION  
 >> CODE: F-B.S.17.06.7  
 >> BRAND: FERMANN  
 >> SIZE: L1800\*W800\*H850MM  
 >> VOLTAGE / POWER: 220V/3000W



● WOK FRYING STATION  
 >> CODE: F-B.S.17.06.8  
 >> BRAND: FERMANN  
 >> SIZE: L1800\*W800\*H850MM  
 >> VOLTAGE / POWER: 220V/7500W



● SUSHI/SASHIMI COUNTER  
 >> CODE: F-B.S.17.06.5  
 >> BRAND: FERMANN  
 >> SIZE: L1800\*W800\*H850MM  
 >> VOLTAGE / POWER: 220V/500W



● INDUCTION STATION  
 >> CODE: F-B.S.17.06.2  
 >> BRAND: FERMANN  
 >> SIZE: L1800\*W800\*H850MM  
 >> VOLTAGE / POWER: 220V/3825W



● CHINESE NOODLE COOKING STATION  
 >> CODE: F-B.S.17.06.3  
 >> BRAND: FERMANN  
 >> SIZE: L1800\*W800\*H850MM  
 >> VOLTAGE / POWER: 220V/4400W



● FLAT STATION  
 >> CODE: F-B.S.17.06.9  
 >> BRAND: FERMANN  
 >> SIZE: L1800\*W800\*H850MM



● SALAD BAR STATION  
 >> CODE: F-B.S.17.06.10  
 >> BRAND: FERMANN  
 >> SIZE: L1800\*W800\*H850MM  
 >> VOLTAGE / POWER: 220V/400W



● GRIDDLE STATION  
 >> CODE: F-B.S.17.06.11  
 >> BRAND: FERMANN  
 >> SIZE: L1800\*W800\*H850MM  
 >> VOLTAGE / POWER: 220V/7400W